

# Timing of Climacturia and Incontinence Recovery Post-Radical Prostatectomy (#144)

Edward J. Choi MSc, Farouk M. el-Khatib MD, Linda M. Huynh MSc, Faysal Yafi MD, Thomas E. Ahlering MD

Department of Urology, University of California, Irvine Health; Orange, CA



Department of  
Urology



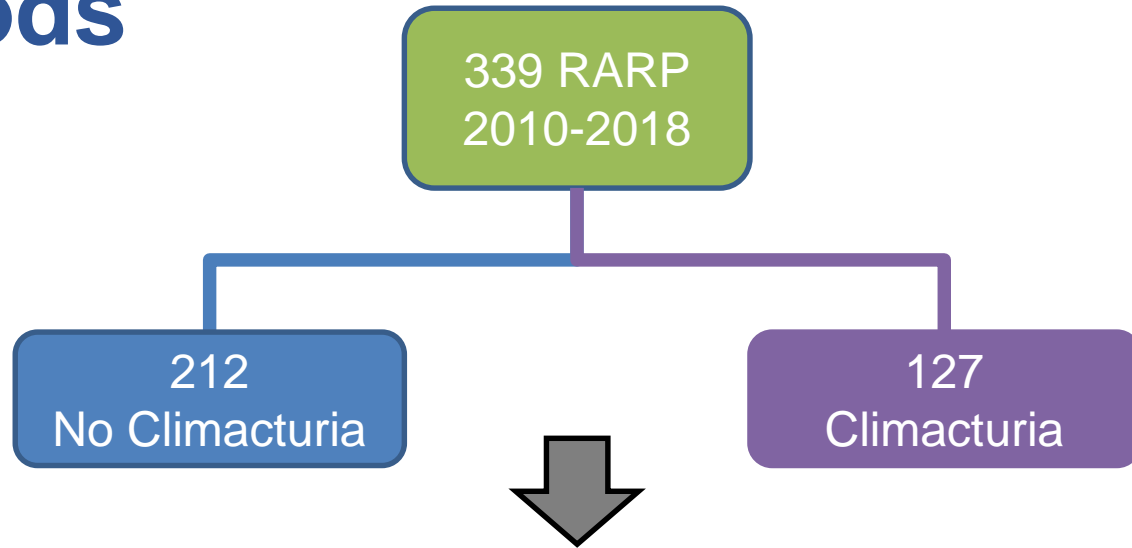
# Disclosures

No conflict of interests to disclose.

# Introduction & Objectives

- Climacturia, the involuntary loss of urine during orgasm, reportedly affects 20-93% of men after radical prostatectomy (RP).
- In contrast, incontinence post-RP affects 5-10% of patients in high-volume institutions.
- In this study, we investigate the association between the timing of recovery from incontinence and climacturia post-RP.

# Methods

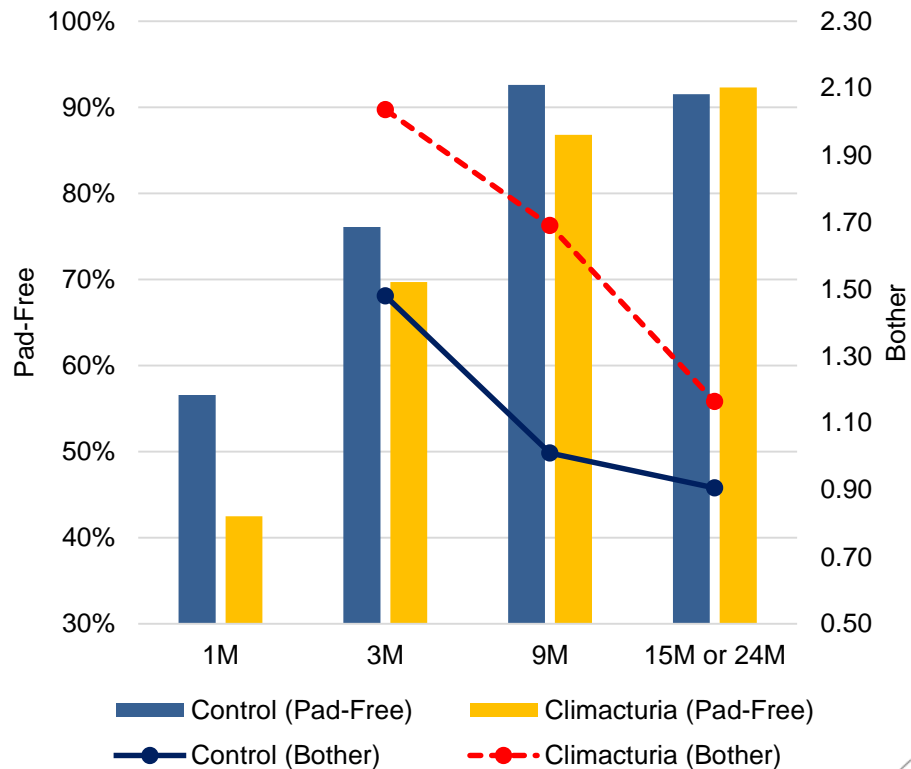


## 7 Logistic Regression Models

- **Pad-Free** – 30 Days, 3 Months, 9 Months, 15 or 24 Months
- **Bother** – 3 Months, 9 Months, 15 or 24 Month

# Results

- Patients with climacturia had significantly **lower 30-day pad-free rates** (43% vs 57%,  $p=0.012$ ) and **higher 3- and 9-month Bother scores** (3-month: 2.04 vs 1.48,  $p=0.001$ ; 9-month: 1.46 vs 1.01,  $p<0.001$ ).



# Results

- After adjusting for covariates, **30-day pad-free** rates, **3-month Bother**, and **9-month Bother** scores were significantly associated with post-operative climacturia.

	B	S.E.	Wald	df	Sig.	Exp(B)
30-Day Pad Free [0 vs. 1]	-0.7	0.236	8.811	1	<b>0.003</b>	0.497
Age (cont.)	-0.026	0.016	2.666	1	0.103	0.974
Preoperative PSA (cont.)	-0.024	0.019	1.519	1	0.218	0.976
GGG-4,5 [0 vs. 1]	-0.342	0.33	1.075	1	0.3	0.71
Constant	1.714	1.028	2.78	1	0.095	5.55

	B	S.E.	Wald	df	Sig.	Exp(B)
3-Month Bother (cont.)	0.314	0.089	12.33	1	<b>&lt;0.001</b>	1.369
Age (cont.)	-0.02	0.017	1.473	1	0.225	0.98
Preoperative PSA (cont.)	-0.017	0.021	0.659	1	0.417	0.983
GGG-4,5 [0 vs. 1]	-0.646	0.376	2.956	1	0.086	0.524
Constant	0.445	1.047	0.181	1	0.671	1.56

	B	S.E.	Wald	df	Sig.	Exp(B)
9-Month Bother (cont.)	0.547	0.131	17.328	1	<b>&lt;0.001</b>	1.728
Age (cont.)	-0.044	0.02	4.875	1	<b>0.027</b>	0.957
Preoperative PSA (cont.)	-0.044	0.029	2.278	1	0.131	0.957
GGG-4,5 [0 vs. 1]	-0.72	0.456	2.497	1	0.114	0.487
Constant	1.918	1.201	2.551	1	0.11	6.807

# Conclusion

- Early counseling should note improvement in climacturia in much the same fashion as recovery of continence.
- Delayed early recovery of continence in climacturia tracks similarly with overactive bladders (OAB), which presents as the potential mechanism for future research.