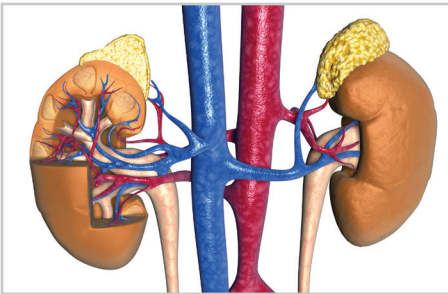


Complex Stone Management



At the UC Irvine Health Center for Urological Care, we specialize in the treatment and management of complex stone disease. Our team's experience is one of the longest and largest in the world. UC Irvine Health urologists have developed many of the minimally invasive technologies and techniques used in the endoscopic and percutaneous treatment of complex upper tract pathology. Our surgeons have treated all aspects of stone disease for the past 20 years without the need to resort to open surgery.

Our goal is to return patients to your practice.

In addition to providing world-class care, we are dedicated to partnering with our colleagues in the community. You will have full access to a referral concierge who will facilitate every step of the referral process. We ensure that your patients are scheduled in

a timely manner with the goal of returning patients to your practice upon completion of treatment.

PCNL: Ultrasound and endoscopic-guided percutaneous nephrolithotomy. UC Irvine Health urologists developed and were among the first to use some of the most novel stone ablation techniques and technologies such as ureteral access sheaths, prone cystoscopy and endoscopic-guided nephrostomy track creation. Currently available only at UC Irvine Health, this unique application of direct endoscopic vision and novel ultrasound technologies allows for unprecedented precision in percutaneous renal access, optimizing stone-free rates and minimizing complications. This procedure allows us to remove very large and complex stones with remarkable safety and efficacy.

The PCNL technique involves the placement of a ureteral access sheath and flexible ureteroscope with the patient in the prone position. Under direct vision with the ureteroscope and at times using ultrasound guidance to minimize fluoroscopy, direct renal access can be obtained.

Advanced Ureteroscopic Stone Management. UC Irvine Health is also the only center in the United States with novel ultrasound targeting

technologies, giving us access to the most advanced endoscopic equipment in the world. The combination of experienced urologists with optimal technology is ideal for patients with complex upper tract disease.

In addition, UC Irvine Health features new operating suites that were designed specifically for minimally invasive stone treatments. Ceiling-mounted, multiscreen booms allow for simultaneous fluoroscopic monitoring and high-definition ureteroscopic optics for precise and effective procedures.

Metabolic evaluation for stone prevention. After treatment of complex stone disease, UC Irvine Health urologists focus on stone prevention. Our goal is to prevent any recurrent stone disease through appropriate dietary and medical therapy. All patients with complex stone disease undergo a comprehensive metabolic evaluation, including 24-hour urine and serum metabolic evaluations.

Our experts in metabolic and management of stone disease can help guide patients in diet optimization, vitamin supplementation, and occasionally medical management. We will work with you and your team to assure that future stone episodes are minimized.

Schedule an appointment today:
714-292-9716

